

Canopy Hood

Ordering Information

- When ordering, specify material, gauge (if non-standard) and opening size. 18" square, 24" square, 36" square, or 48" square. Other sizes available upon request. Maximum size 72"x48".

- Hemmed end standard.
- If flange needed, please see Transitions.

Ø in.	A in.	B in.	X in.	Y in.	L in.	Std Weight Lbs
16	18	18	4	2	15.5	9.00
16	24	24			20	16.00
18	36	36			29	36.00
18	48	48			38	64.00

Construction:

Seam: lapped, spot welded, and caulked.

Collars: located on the exterior side of each port and considered as air flow non-directional. Collars have a laser welded longitudinal seam. If air flow directional product is required, it must be stated on the PO and additional cost may be incurred. A raised lap seam and spot weld are used for attaching the collar to the body and no caulking is used. If caulking is required, additional cost may be incurred.

Optional End Styles (Round End)

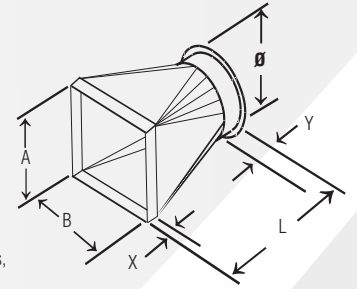
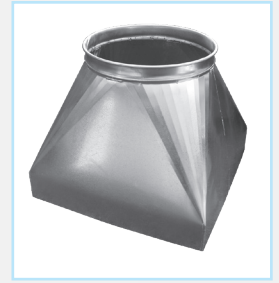
Standard QF end can be changed to Raw ID (RI), Raw OD (RO), No Fitting (NF), Flat Flange (FFL), Angle Flange (AFL), or Van Stone (VS).

Square End: Hemmed edge.

QF Material Options

Galv				SS			
		Size (in)				Size (in)	
Gauges		Min. Ø	Max. Ø	Gauges		Min. Ø	Max. Ø
Std	20	16	18	Std	20	16	18
Optional	18	16	18	Optional	18	16	18
	16	16	18		16	16	18
	14	16	18				

*NOTE: Minimum L = .75 (B). If less, square to square transition will be provided. 7" minimum L allowable for Sq to Rd and 4" L minimum allowable for Sq to Sq.



Hood Design Basis:
150 fpm capture velocity
2 ft. distance from source