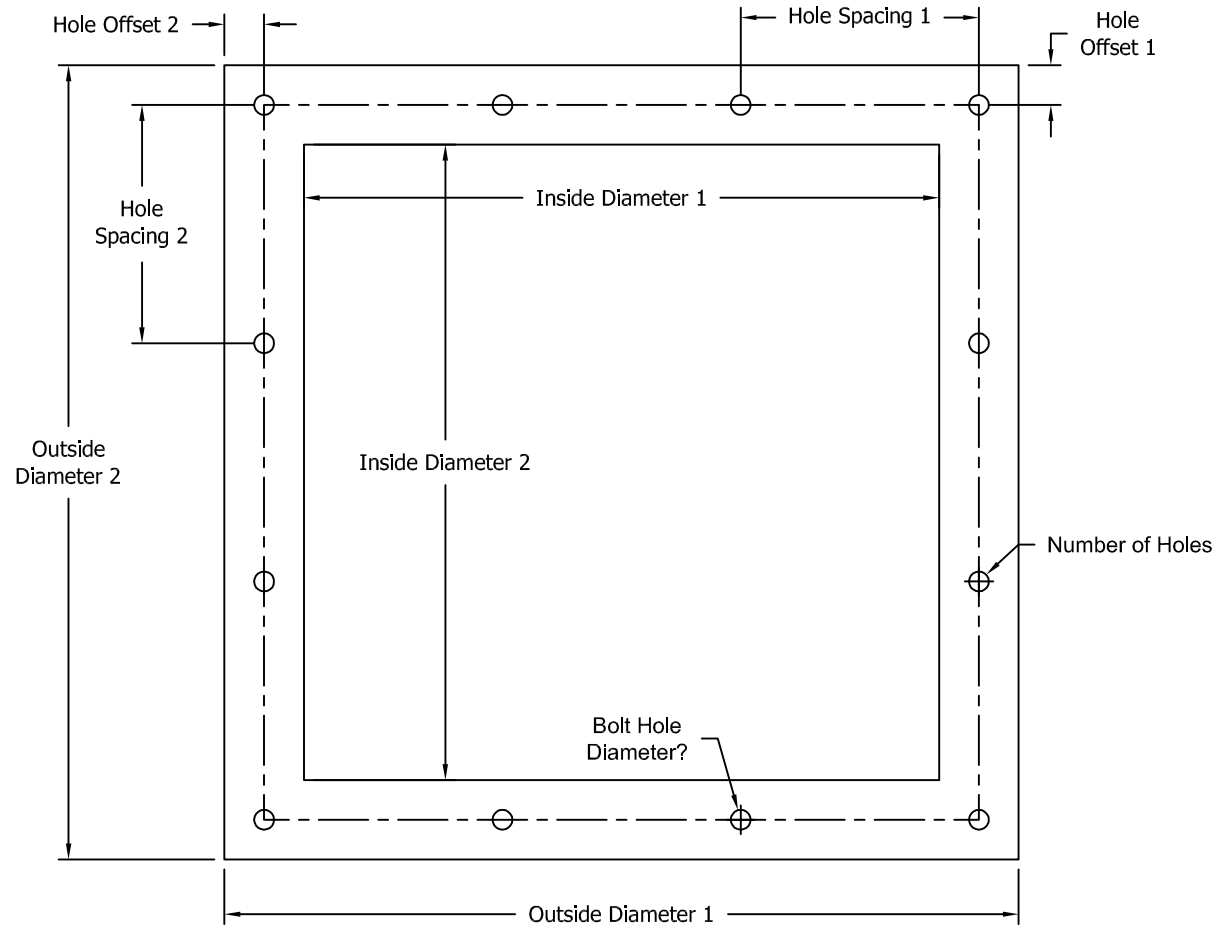


REV #	DESCRIPTION	NAME	DATE



Inside Diameter 1	
Outside Diameter 1	
Hole Offset 1	
Hole Spacing 1	
Inside Diameter 2	
Outside Diameter 2	
Hole Offset 2	
Hole Spacing 2	
Bolt Hole Diameter	
Number of Holes	
Material Type and Gauge Thickness	

\*Standard Flange is Black Metal Angle Bar  $\frac{3}{16}$ " either 1.5"x1.5" or 2"x2" Width\*

\*Standard Flat Flange (FFL) Material =  $\frac{3}{16}$ " Black Metal or 304SS\*

\*If Non-Standard FFL Material is Required, Use Chart Above\*

DWG NAME: Flange Information.dwg

PART DESCRIPTION: Values Needed for Custom Flange		P/N:		APPROVALS	
C:\Users\mibam\Desktop\Special Projects\Procedures Project\Originals		MATERIAL: SEE NOTES		ORIGIN DATE: 11/8/17	
UNSPECIFIED TOLERANCES		SCALE: NTS		DRAWN BY: Mike Bame	
Dimensions = +/- 0.500		<small>PROPRIETARY INFORMATION</small> This document is the property of NORDFAB, LLC. The design and information contained may not be disclosed or reproduced either in whole or part without written consent of NORDFAB, LLC.	DO NOT CHANGE MANUALLY. REVISIONS TO BE MADE BY ENGINEERING DEPARTMENT ONLY	ENG.	
Fractions = +/- 1/2"				PROD.	
Angles = +/- 1°				Q.C.	

**NORDFAB**  
 Ducting  
 NORDFAB, LLC  
 150 Transit Avenue  
 Thomasville, NC 27361  
 Ph: 800-532-0830  
 Fax: 336-889-7873

**A**