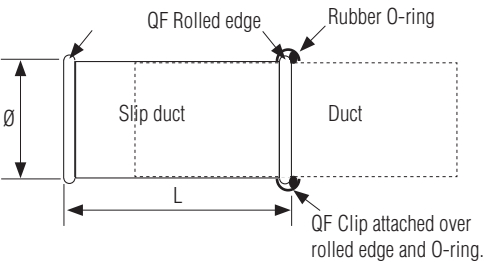
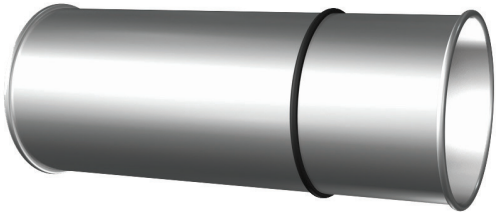


# QF Slip Duct (includes O-ring and QF Clip)

QF Slip Duct, Laser Welded Seam						
Ø mm	O/D mm	I/D mm	Rolled Edge (nom. mm.)	Length (nom. mm)	Weight kg	Galvanised Steel
080	81	80	6	278	0,5	0,7
100	101	100	6	278	0,6	
125	127	126	6	278	0,7	
140	142	141	6	278	0,8	
150	151	150	6	278	0,9	
160	162	161	6	278	0,9	
180	182	181	8	271	1,0	
200	204	203	8	271	1,2	
224	228	227	8	271	1,3	
250	253	252	8	271	1,4	
300	301	300	10	262	1,7	
315	317	316	10	262	1,8	
350	352	351	10	262	2,0	
400	402	400	10	262	2,9	

**Construction**  
Longitudinal seam  
type: laser or plasma  
welded.

**Ends**  
QF (Quick-Fit rolled  
edge).



The item includes:  
1 pcs Slipduct  
1 pcs Rubber O-ring  
1 pcs QF-clip standard

QF Slip Duct, Folded Seam						
Ø mm	O/D mm	I/D mm	Rolled Edge (nom. mm.)	Length (nom. mm)	Weight kg	Galvanised Steel
450	452	450	10	262	3,3	0,9
500	502	500			3,7	
560	562	560			4,1	
630	632	630			4,6	
710	712	710			5,2	

Compliance / Rating of Product Components		
Product	Material	Compliance / Rating
QF Slip Duct	Galvanised	DX51D with Z275 Coating
QF Clip	Galvanised	ASTM A527 with a G-90 rating
Joka Seal Metal Sealant 2315	Acetone blend	AAMA Specification 801.1
O-ring	EPDM	Shore 60

Temperature Rating of Product Components			
° C	Slip Duct & QF Clip	Sealants	O-ring
180°	Galvanised Steel	Joka Seal Metal Sealant 2315	EPDM
121°			
-20°			

**Additional Notes**

At temperatures ranging between 200° C and 250° C, the zinc-iron alloy layers in galvanised steel will continue to provide a high level of protection from corrosion. However, there may be some peeling, changes in mechanical properties, and reduction in the corrosion protection. Recommended max. service temperature is 200° C.