

HIGH VACUUM

Pipe System Product Catalogue

HV 21.1 English

NEW
STAINLESS
STEEL

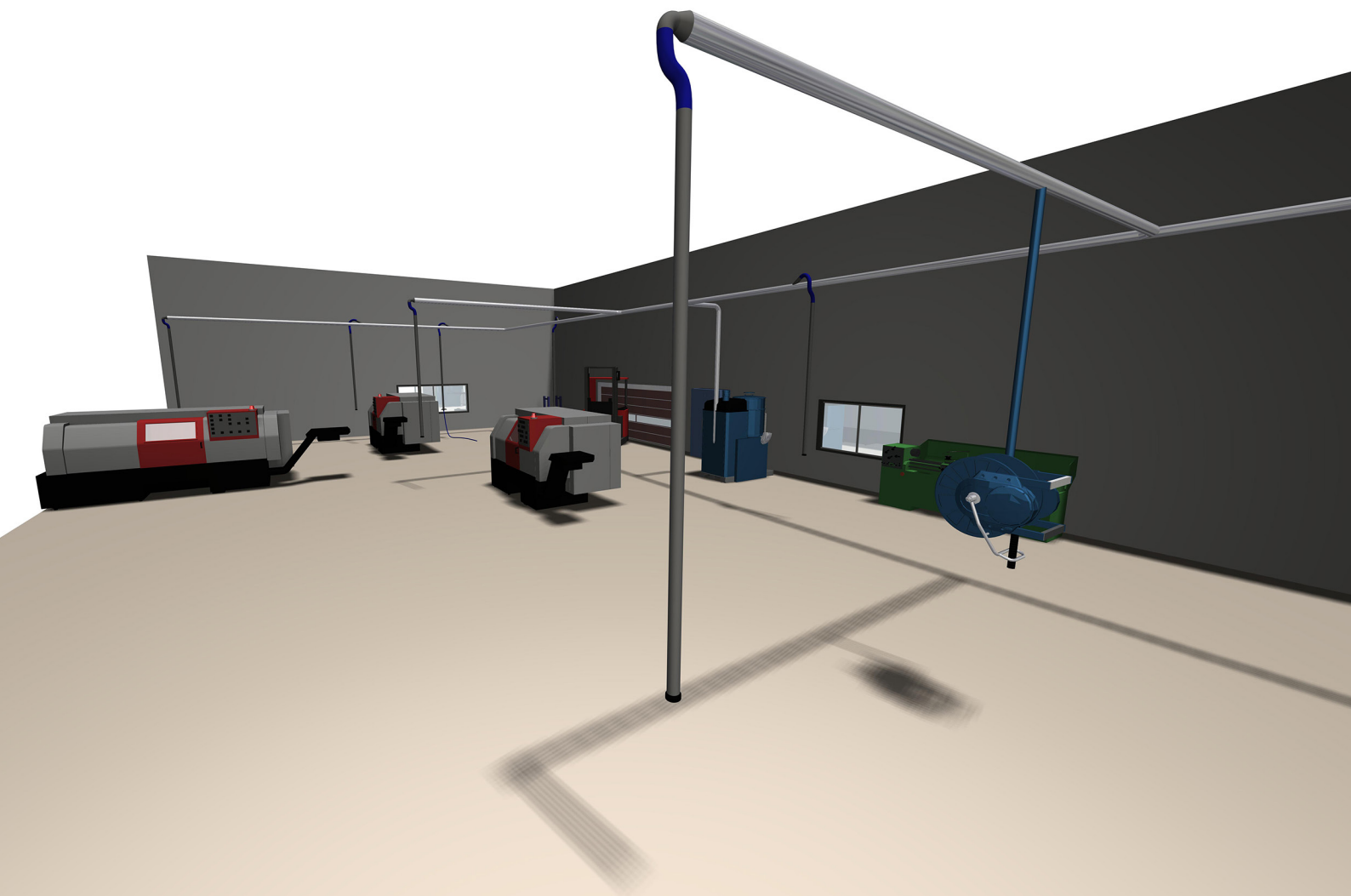
Fast, Friendly and Reliable™

Our high vacuum pipes can be used for many applications.

The term 'high vacuum' refers to the high vacuum and low airflow used to catch, transport and filter fumes, dust and other particles.

Applications for our ducting include:

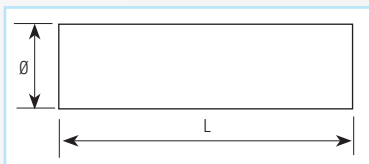
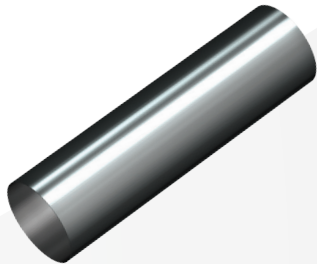
- Extraction of fumes from welding torches
- Extraction of grinding dust directly from the handheld grinding machine thanks to our range of manifolds that matches most hand-held machines on the market
- Cleaning of floors and machines etc, with our wide choice of accessories
- Transport of large volumes of material which may be both heavy and abrasive



New SS Construction Options

In addition to galvanised steel, Nordfab is now offering our High Vacuum duct in 304 Stainless Steel construction as well as food-grade quality 316L Stainless Steel construction. All 316LSS products have documented certificate of origin.

ORDER EXAMPLE:
Pipe HV Galv 1,2mm 102RO L=6m



Pipes

Main pipes

Ø mm	Item no. Galv	Item no. 304SS	L mm	Thickness mm	Weight, kg	Ø mm	Item no. 316L SS	L mm	Thickness mm	Weight kg
50	40130440	8210005128	3000	1,2	5,5	50	8210005000	3000	1,2	5,7
50	40130450	8210005129	6000	1,2	10,9	50	8210005001	6000	1,2	11,4
63	40130420	8210005130	3000	1,2	5,5	63	8210005002	3000	1,26	7,5
63	40130430	8210005131	6000	1,2	11,0	63	8210005003	6000	1,6	15,0
76	40130400	8210005132	3000	1,2	5,6	76	8210005004	3000	1,6	9,0
76	40130410	8210005133	6000	1,2	11,1	76	8210005005	6000	1,6	18,0
102	40130380	8210005134	3000	1,2	8,8	102	8210005006	3000	2,0	15,0
102	40130390	8210005135	6000	1,2	17,5	102	8210005007	6000	2,0	30,0
127	40130360	8210005136	3000	1,5	9,3	129	8210005008	3000	2,0	19,0
127	40130361	8210005137	6000	1,5	18,6	129	8210005009	6000	2,0	38,1
152	40130340	—	3000	1,5	11,0	154	8210005010	3000	2,0	22,5
152	40130350	—	6000	1,5	33,0	154	8210005011	6000	2,0	45,0
203	40130320	—	3000	1,5	22,0					
203	40130330	—	6000	1,5	44,0					

ORDER EXAMPLE:
Pipe Coupling 304SS 50mm



Pipe coupling

Used to join pipes together.
The rubber is electrically conductive.

Ø mm	Item no. Galv	Item no. 304SS	L mm	Weight kg	Ø mm	Item no. 316L SS	L mm	Weight kg
50	43884001	8210002213	65	0,25	51	8210005058	65	0,12
63	40139350	8210002193	65	0,25	63	8210005059	65	0,15
76	40139420	8210002194	65	0,25	76	8210005060	65	0,15
102	40139370	8210002195	65	0,35	102	8210005061	65	0,15
127	40139410	8210002196	65	0,43	127	8210005062	65	0,2
152	40139360	8210002197	65	0,50	152	8210005063	65	0,25
203	40139400	8210002198	65	0,60	203	8210005064	65	0,35

ORDER EXAMPLE:
Pipe Coupling Galv 76 mm L= 150
White NBR Strip & Ring 304L



Eurac HL Pipe coupling

Used to join pipes together. Longer length strengthens the pipe assembly.
Galvanised exterior with 316L Stainless Steel interior.
The rubber is electrically conductive.

Ø mm	Item no. 316L SS	L mm	Weight, kg
50	8210005065	150	0,68
63	8210005066	150	0,75
76	8210005067	150	0,83
102	8210005068	150	1,06
127	8210005069	150	1,20
152	8210005070	150	1,79
203	8210005071	150	2,18

ORDER EXAMPLE:
Clip Beam G1112



Beam clamp

Used in pairs to fix universal profiles to beams where drilling is not permitted/ possible.

Beam flange: max. 25 mm

Item no.	Weight kg
40170250	0,3

ORDER EXAMPLE:
Clamp Pipe HV Galv 76mm



Pipe clamp

Used to suspend pipes together with universal bracket or profile.

In two halves, bolt and nut.

Ø mm	Item no. Galv	Weight kg
50	40170160	0,1
63	40170170	0,1
76	40170180	0,1
102	40170190	0,2
127	40170230	0,2
152	40170210	0,25
203	40170220	0,30



Bend mounted to a beam through use of Pipe Clamp and Beam Clamp

ORDER EXAMPLE:
Bracket Universal Galv L=0,3m G800



Universal bracket

For suspending pipes.

L m	Item no. Galv	Weight kg
0,15	40170010	0,35
0,3	40170020	0,65
2	40170030	0,85

ORDER EXAMPLE:
Nut M8 universal



Channel Nut with Short Spring

Ø mm	Item no.
Fits all universal brackets	40170260

ORDER EXAMPLE:
Bracket Wall Universal Galv L=2m



Universal bracket

For suspending wall-mounted pipes.

L m	Item no. Galv	Weight kg
0,1	40170060	0,05
0,3	40170070	0,30
2	40170080	1,00

ORDER EXAMPLE:
Pipe Hanger HV 316SS 154mm



Pipe Hanger HV

For suspending 316L pipes.

Ø mm	Item no. 316L	Weight kg
50	8210005052	0,2
63	8210005053	0,25
76	8210005054	0,27
102	8210005055	0,31
129	8210005056	0,36
154	8210005057	0,4

ORDER EXAMPLE:
Bend HV Galv 1,5mm 63RO 90Deg

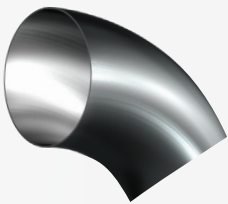


Bends, 90° Galvanised steel bends

Ø mm	Item no. Galv	Item no. 304SS	Center Radius mm	Thickness mm	Weight kg
50	40130790	8210005109	85	1,5	0,3
63	40130780	8210005111	100	1,5	0,5
76	40134020	8210005113	170	1,5	1,0
102	40131070	8210005115	200	2,0	2,0
127	40134000	8210005117	170	2,0	2,1
152	40130750	—	225	2,0	3,2
203	40134251	—	300	2,0	4,8

Ø mm	Item no. 316L SS	Center Radius mm	Thickness mm	Weight kg
50	8210005018	85	1,2	0,15
63	8210005019	100	1,6	0,33
76	8210005020	170	1,6	0,4
102	8210005021	200	2,0	0,8
129	8210005022	170	2,0	1,9
154	8210005023	225	2,0	2,1

ORDER EXAMPLE:
Bend HV Galv 1,5mm 50RO 45Deg

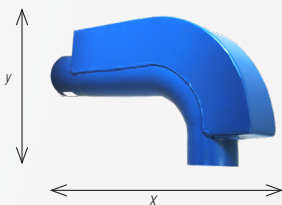


Bends, 45° Galvanised steel bends

Ø mm	Item no. Galv	Item no. 304SS	Center Radius mm	Thickness mm	Weight kg
50	40130840	8210005108	85	1,5	0,2
63	40134100	8210005110	100	1,5	0,3
76	40134030	8210005112	170	1,5	0,7
102	40131080	8210005114	200	2,0	1,2
127	40134010	8210005116	170	2,0	1,4
152	40134340	—	225	2,0	2,1
203	40134249	—	300	2,0	2,5

Ø mm	Item no. 316L SS	Center Radius mm	Thickness mm	Weight kg
50	8210005012	85	1,2	0,26
63	8210005013	100	1,6	0,58
76	8210005014	170	1,6	0,71
102	8210005015	200	2,0	1,6
129	8210005016	170	2,0	1,9
154	8210005017	225	2,0	2,1

ORDER EXAMPLE:
Bend Reinforced Steel HV MS 2mm
63RO RAL 5009

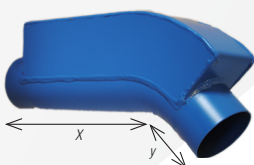


Reinforced steel bends, 90° steel bends with swarf box

Finish RAL5009 blue

Ø mm	Item no.	Thickness mm	Weight kg	X mm	Y mm
63	40134201	1,5	1,5	265	115
102	40134221	2,0	4,9	400	185

ORDER EXAMPLE:
Bend Reinforced Steel HV MS 2mm
102RO 90Deg RAL 5009

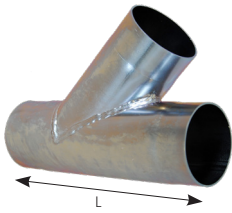


Reinforced steel bends 45° steel bends with swarf box

Finish RAL5009 blue

Ø mm	Item no.	Thickness mm	Weight kg	X mm	Y mm
63	40134301	1,5	1,0	185	35
102	40134321	2,0	3,8	260	45

ORDER EXAMPLE:
Branch HV Galv 2mm 127RO 127RO 76RO
45Deg



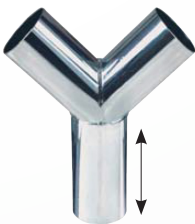
Branch pipes

45° galvanised branch pipes used to join vacuum pipes together or connect a suction pipe.

Ø mm	Item no. Galv	Item no. 304SS	L mm	Thickness mm	Weight kg
50-50-50	40130650	8210005118	150	1,5	0,4
63-63-63	40130660	8210005119	300	1,5	0,6
76-76-50	40135660	8210005126	200	1,5	
76-76-63	40135650	8210005120	200	1,5	1,0
76-76-76	40135640	8210005121	270	1,5	1,0
102-102-63	40130600	—	280	2,0	1,4
102-102-76	40135630	8210005123	300	2,0	1,8
102-102-102	40136038	8210005122	300	2,0	
127-127-76	40135620	—	300	2,0	2,2
127-127-102	40135610	8210005124	350	2,0	2,8
152-152-152	40134150	—	500	2,0	4,0

Ø mm	Item no. 316L SS	L mm	Thickness mm	Weight kg
50-50-50	8210005024	150	1,2	0,4
63-63-63	8210005025	300	1,6	0,75
76-76-50	8210005026	200	1,6	1,0
76-76-63	8210005027	200	1,6	1,1
76-76-76	8210005028	270	1,6	1,1
102-102-76	8210005029	300	2,0	2,1
102-102-102	8210005030	280	2,0	2,3
127-129-102	8210005031	350	2,0	2,8
154-154-129	8210005032	500	2,0	3,95

ORDER EXAMPLE:
Branch Y HV Galv 2mm 102RO 102RO 102RO
45Deg



Y-Branch pipes 45° branch

Ø mm	Item no. Galv	Item no. 304SS	L mm	Thickness mm	Weight kg
50-50-50	40136030	8210005145	150	1,5	0,4
63-63-63	40136031	8210005146	150	1,5	0,6
76-76-76	40136032	8210005147	150	1,5	1,0
102-102-102	40136033	8210005148	200	2,0	1,4
127-127-127	40136034	8210005149	200	2,0	2,2
152-152-152	40136035	—	200	2,0	2,8
203-203-203	40136036	—	200	2,0	4,0

Ø mm	Item no. 316L SS	L mm	Thickness mm	Weight kg
50-50-50	8210005033	150	1,6	0,33
63-63-63	8210005034	150	1,6	0,72
76-76-76	8210005035	150	1,6	1,0
102-102-102	8210005036	200	2,0	2,4
129-129-129	8210005037	200	2,0	2,9
154-154-154	8210005038	200	2,0	3,9

ORDER EXAMPLE:
Branch Parallel HV Galv 2mm 152RO 152RO
103RO

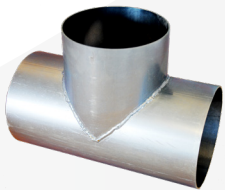


Branch pipes, parallel

Galvanised branch pipes. Used to join vacuum pipes together. Parallel branch.

Ø mm Galv	Item no. Galv	Item no. 304SS	L mm	Thickness mm	Weight kg
102-102-102	40130630	8210005127	350	2,0	2,7
152-152-102	40130640	—	250	2,0	2,6

ORDER EXAMPLE:
Pipe T HV Galv 2mm 152RO 152RO 152RO

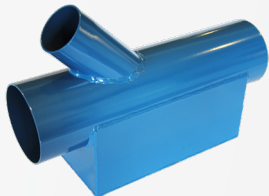


T-pipe

Galvanised pipe branch used between dust separator and vacuum unit for parallel connection.

Ø mm Galv	Item no.	L mm	Thickness mm	Weight kg
152-152-152	40130120	250	2,0	4,4
203-203-203	40130210	300	2,0	6,1

ORDER EXAMPLE:
Branch Reinforced HV MS 2mm 102RO
102RO 63RO 45Deg RAL 5009



Reinforced branch pipes

Branch pipes with swarf box.

Finish RAL5009 blue, 45°

Ø mm	Item no.
63-63-63	40134101
102-102-63	40134121
102-102-102	40134131

ORDER EXAMPLE:
End Cap Galv 0,7mm 203RO



End cover

Used to block of the end of a pipe.

Ø mm	Item no. Galv	Ø mm	Item no. 316L SS	Weight kg
50	40130031	50	8210005046	0,06
63	40130030	63	8210005047	0,09
102	40130040	76	8210005048	0,12
152	40130050	102	8210005049	0,19
203	40130060	129	8210005050	0,35
		154	8210005051	0,47

ORDER EXAMPLE:
Reducer HV Galv 2mm 152RO 127RO



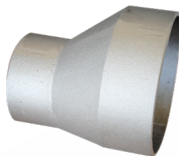
Cone / Reducer

Galvanised.

Ø mm	Item no. Galv	Item no. 304SS	L mm	Thickness mm	Weight kg
63-50	40130730	8210005138	67	1,5	0,2
76-50	40135750	8210005139	70	1,5	0,2
76-63	40135740	8210005140	75	1,5	0,2
102-76	40135830	8210005141	120	1,5	0,4
108-102	40135840	8210005142	120	1,5	0,5
127-76	40135820	8210005144	120	2,0	0,6
127-102	40135810	8210005143	120	2,0	0,7
152-127	40135800	—	120	2,0	0,8
203-152	40130020	—	150	2,0	1,4

Ø mm	Item no. 316L SS	L mm	Thickness mm	Weight kg
63-50	8210005039	67	1,5	0,25
76-50	8210005040	70	1,5	0,35
76-63	8210005041	75	1,5	0,27
102-76	8210005042	120	2,0	0,7
129-76	8210005043	120	2,0	0,8
129-102	8210005044	120	2,0	0,8
154-129	8210005045	120	2,0	0,9

ORDER EXAMPLE:
Reducer, Eccentric HV Alu 4,5mm 102RO 63RO



Reducer, eccentric

Cast aluminum.

Ø mm	Item no.	L mm	Thickness mm	Weight kg
102-63	40130710	125	1,5	0,6
152-102	40130700	145	2,0	1,1



ORDER EXAMPLE:
Hose Natural Rubber 152mm L=12m



Rubber Hose

The hose will be used as bends. Rubber bends are used when conveying abrasive material such as shavings, sand, dust and powder etc. Inner tube: wear resistant SBR/NR, black, smooth. Reinforcement: synthetic textile with embedded steel helix. Cover: wear and weather resistant SBR/NR, black, corrugated. Temperature range: -40°C to +90°C Electrical properties: conductive tube and cover. R<106Ω/m Available in 12m lengths.

Inside Ø mm	Item no
63	82100126
76	82100127
102	82100128
127	82100129
152	82100130

ORDER EXAMPLE:
Clamp Hose HV Galv 127mm f/
Rubber hose



Hose Clamps

Two clamps needed for each length of hose.

Inside Ø mm	Item no.
63	82100131
76	82100132
102	82100133
127	82100134
152	82100135

Flap Valve

The Flap Valve KV 50 can be mounted onto suction pipes or vacuum hoses. The valve is well suited to welding, cleaning, and grinding where automatic valves are required. The Flap Valve is constructed of electrically conductive plastic material. Male coupling Ø 50 mm fits directly into the flap valve.



Ø mm	Item no.	Designation	Description
50	40146450	KV 50	Flap Valve for mounting on steel pipe
50	40146455	KV 50-HC	Flap Valve with 50 mm hose coupling for mounting on hose
—	40141550	AS set	AS set with micro-switch for automatic start/stop of vacuum unit

Hose Couplers, swivelling

These hose couplings and flap valves fit 51 series cleaning equipment, swivels, and most mobile vacuum units as standard.



Hose Ø mm	Item no.	Model	Type
51	43885001	SV51	Flap Valve
51	43930102	SM51	Male coupling
51	43930101	SF51	Female coupling

ORDER EXAMPLE:
Leaf Valve Manual Galv 76RO
63RO



Leaf Valve MDKB

Electrically zinc coated with spring-loaded lock. Connected with hose coupling MDKS.

Ø mm	Item no.	Weight, kg
63-63	40136002	0,50
76-63	40136003	0,60
76-76	40136004	0,65

ORDER EXAMPLE:
Leaf Valve Manual w/ Switch Galv
63RO 63RO



Leaf Valve MDKM

Electrically zinc coated with spring-loaded lock and furnished with a micro switch. Connected with hose coupling MDKS

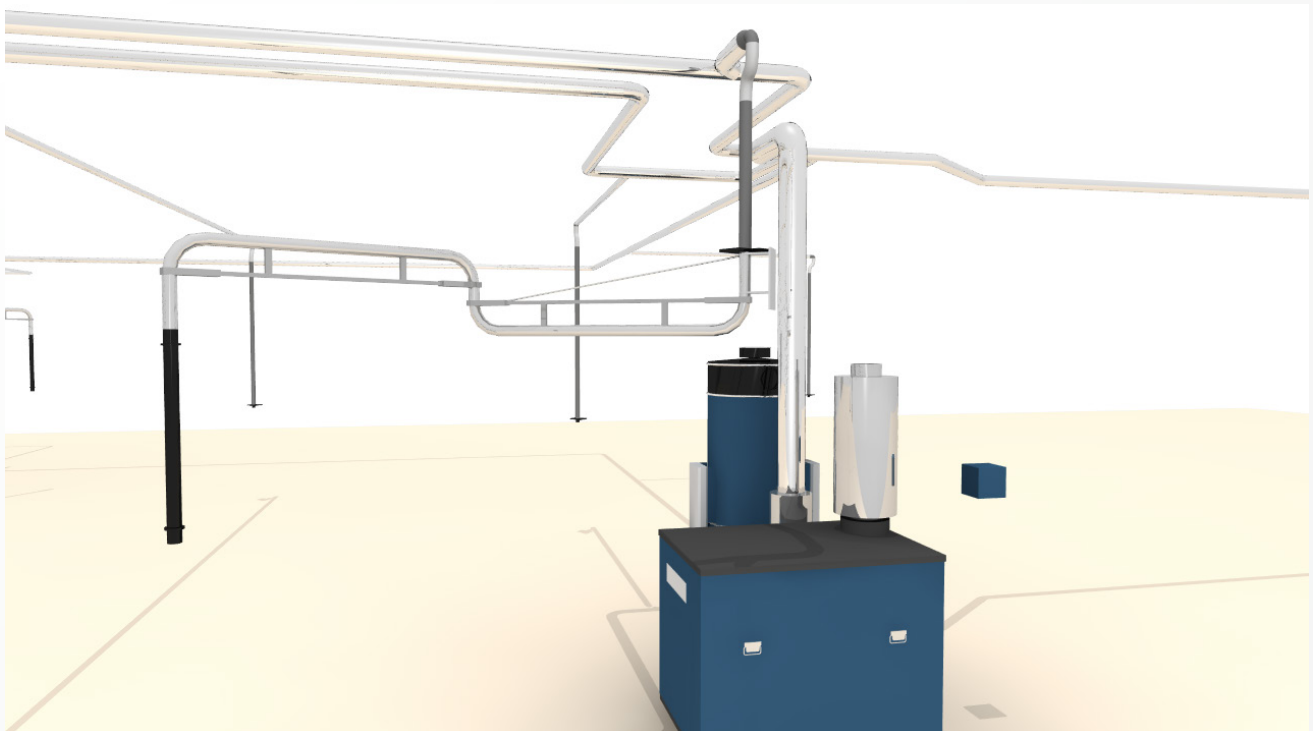
Ø mm	Item no.	Weight, kg
63-63	40136022	0,65
76-63	40136023	0,75
76-76	40136024	0,80

ORDER EXAMPLE:
Connector Hose HV Galv 63RO
63RO



Hose Connector MDKS

Ø mm	Item no.
63-50	40136043
63-63	40136044
76-63	40136045

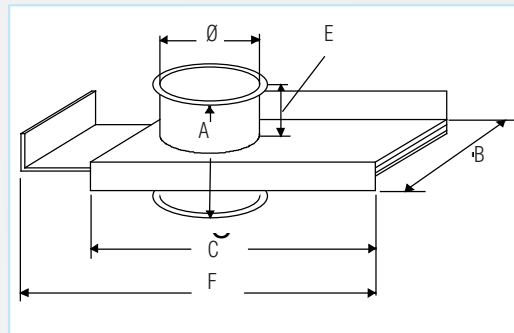
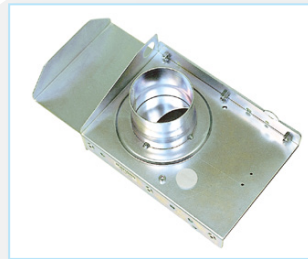


SBBA Manual Damper

The SBBA is a circular slide damper for tight closure. In the closed position, the damper is airtight and silent. Since there is no damper blade in the air stream in the open position, the damper is suitable for use in systems for dust-laden air. The damper is used for closing extraction points on machinery and in workplaces not currently in use.

Ø mm	Item no. Galv	A mm	B mm	C mm	E mm	F mm	Weight kg
50	8210004509	145	140	195	60	220	2,1
63	8210004510	145	140	195	60	220	2,1
76	8210004511	145	160	225	60	250	2,7
102	8210004514	145	205	315	60	340	3,6
127	8210004518	145	205	315	60	340	3,7
152	8210004521	145	230	365	60	390	4,6
203	8210004525	145	280	465	60	490	5,6

ORDER EXAMPLE:
Damper Manual SBBA Galv 76R0

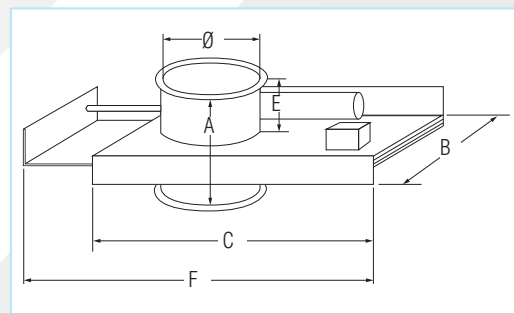
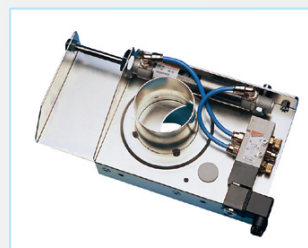


SBBB Pneumatic Damper

The SBBB is a circular compressed air powered automatic slide damper for rapid and tight closure. Since the damper is opened and closed automatically, extraction is always focused on the connections, extraction points or machines currently in operation. This maximizes extraction power, with lower energy consumption as a bonus.

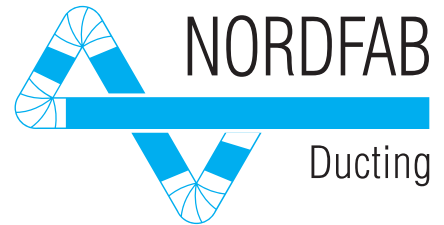
Ø mm	Item no. Galv	A mm	B mm	C mm	E mm	F mm	Weight kg
50	8210004688	145	140	195	60	220	2,3
63	8210004689	145	140	195	60	220	2,3
76	8210004690	145	160	225	60	250	3,0
102	8210004691	145	205	315	60	340	4,0
127	8210004928	145	205	315	60	340	4,0
152	8210004933	145	230	365	60	390	5,0
203	8210004938	145	280	465	60	490	6,2

ORDER EXAMPLE:
Damper Automatic SBBB Galv 102R0 230VAC



Dampers from Ø 50-152 have one cylinder and dampers above Ø 152 have two cylinders

- The damper should be connected to clean and dry compressed air
- Working pressure 5-8 bar
- Maximum temperature 80° C
- Voltage: 230V AC (Coils for 24-48-110V AC & DC optional)



All our 316SS parts have 3.1 Material certification. SS-EN 10204. This European standard shows traceability for every product, documenting the entire process from manufacturing to finished product. The standard also certifies that material testing is done per batch. The certification includes all elements, at no additional cost.

Nordfab can also provide an RA-certificate and an EL-polishing certificate.

RA-certificate shows the surface finish, used typical in pharmaceutical industry. Additional charges apply for this finish option.

EL-polishing certificate, used typical in pharmaceutical industry. Additional charges apply for this polishing option.

Please visit our website to see our General Conditions of Sale.



Nordfab Europe A/S sales and production in Assen Mariager, Denmark



Nordfab UK sales and production in Leeds, England

Nordfab Europe

Industrivej 13
Assens 9550 Mariager, Danmark
+45 86 47 11 00
email salesdk@nordfab.com



Nordfab UK

Limewood Approach Seacroft
Leeds, LS14 1NG Phone
+44 1132 739 400
email uksales@nordfab.com

www.nordfab.com

2021-04-29

Fast, Friendly and Reliable™