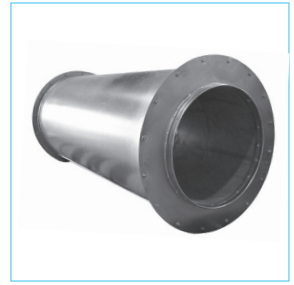


Silencer

Ordering Information

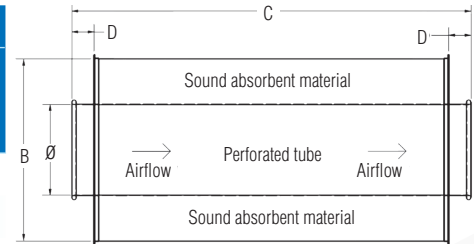
- When ordering, specify material, gauge (if non-standard), dimension and end style.
- Reduces sound levels from fans and equipment. Due to varying applications, no decibel testing has been performed on this product.
- Air flow directional arrow sticker is attached to product.



Ø in.	B OD in.	C Length in.	D (QF) in.	D (AFL/FLL) in.	Std Weight Lbs
3	11	28	2	3.5	10
4	12	28			21
5	13	28			35
6	14	30			43
7	15	30			54
8	16	35			65
9	17	40			76
10	18	48			89
11	19	54			96
12	20	54			104
13	21	60			113
14	22	60			122
15	23	64			149
16	24				176
17	25		201		
18	26		225		
19	27		245		
20	28		265		
21	29		288		
22	30		310		
23	31		358		
24	32		406		
26	34	68	N/A	4	546
28	36				600
30	38				678
32	40				700
34	42				770
36	44				897
38	46				974
40	48				1118

QF Material Options

Galv				SS			
Gauges	Size (in)		Gauges	Size (in)			
	Min. Ø	Max. Ø		Min. Ø	Max. Ø		
Standard	20	3	16	20	3	16	
	16	17	40	16	17	40	



Flanged Material Options

Galv				SS			
Gauges	Size (in)		Gauges	Size (in)			
	Min. Ø	Max. Ø		Min. Ø	Max. Ø		
Standard	20	3	16	20	3	16	
	16	17	40	16	17	40	

Construction

Collars: Caulked and painted.

Outer Tube: On 16" diameter pipe and all smaller sizes, longitudinal seam is laser welded. On 17" and greater, seam is plasma welded.

Optional End Styles: Standard QF end can be changed to Raw ID (RI), Raw OD (RO), No Fitting (NF), Hose Adapter (RF), Flat Flange (FLL), Angle Flange (AFL), or Van Stone (VS).