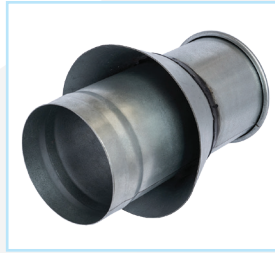


Oil Mist Drain Back for Hose

Ordering / Installation Information

- When ordering, specify material, gauge (if non-standard), dimension and end style.
- Connected to hose, the Drain Back returns oil to the ducting line and helps prevent oil from leaking onto machinery.



Ø in.	Length in.	Std Weight Lbs
3	11.5	1.5
4	8.5	1.9
5	8.5	1.3
6	8.5	2.8
7	8.5	3.4
8	8.5	3.8
9	8.5	4.4
10	8.5	4.9
11	8.5	5.3
12	8.5	5.8

QF / Flanged Material Options

Galv				SS			
Gauges	Size (inches)		Gauges	Size (inches)			
	Min. Ø	Max. Ø		Min. Ø	Max. Ø		
Std	22	3	12	Std	22	3	12
Optional	20	3	12	Optional	20	3	12
	18	4	12		18	4	12
	16	8	12		16	8	12