

No-Loss Stackhead

Ordering Information

- When ordering, specify material, gauge (if non-standard), dimension and end style.
- Used when exhausting from fans or stacks through roof
- Eliminates back pressure on fan while providing weather protection.
- Flange is for guide wire attachment.
- Air flow directional arrow sticker is attached to product.



\varnothing in.	Angle Flange \varnothing in.	B in.	Std Weight Lbs
3	4	18	4.00
4	5	22	6.50
5	6	26	8.00
6	7	30	10.00
7	8	34	14.00
8	9	38	23.08
9	10	42	32.00
10	11	46	36.00
11	12	50	39.00
12	13	54	42.00
13	14	58	45.00
14	15	62	50.00
15	16	66	56.00
16	17	70	60.00
17	18	74	64.00
18	19	78	69.75
20	21	86	79.16
22	23	94	84.00
24	25	102	98.56
26	27	110	118.00
28	29	118	132.05
30	31	126	143.90
32	33	134	152.83
34	35	142	160.76
36	37	150	170.81
38	39	158	179.81
40	41	166	193.25

QF Material Options (Bottom Inner Pipe)

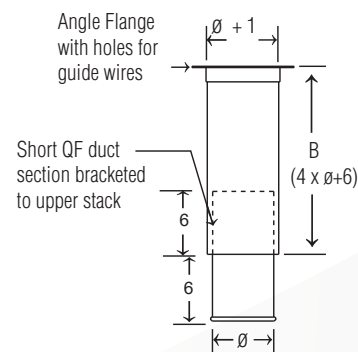
Galv				SS			
Gauges	Size (in)		Gauges	Size (in)			
	Min. \varnothing	Max. \varnothing		Min. \varnothing	Max. \varnothing		
Standard	22	3	12	22	3	12	
	20	13	24	20	13	24	
Optional	18	4	24	Optional	16	8	24
	16	8	24				
	14	8	24				

Flanged Material Options (Bottom Inner Pipe)

Galv (Std)				SS			
Gauges	Size (inches)		Gauges	Size (inches)			
	Min. \varnothing	Max. \varnothing		Min. \varnothing	Max. \varnothing		
Standard	22	3	12	22	3	12	
	20	13	28	20	13	28	
	18	30	40	18	30	40	
Optional	18	4	28	Optional	18	4	28
	16	8	40		16	8	40
	14	8	50				
	12	10	72				

QF Material Options (Top Outer Pipe)

Galv				SS			
Gauges	Size (in)		Gauges	Size (in)			
	Min. \varnothing	Max. \varnothing		Min. \varnothing	Max. \varnothing		
Standard	22	3	12	Standard	22	3	12
	20	13	22		20	13	22
	16	24	24		16	24	24
Optional	18	4	24	Optional	16	8	24
	16	8	24				
	14	8	24				



Construction

Inner pipe: laser welded up to 24". 26" and up is plasma welded.

Outer tube: on 24" diameter pipe and all smaller sizes, longitudinal seam is laser welded. On 26" and greater, seam is plasma welded. 14" to 28", outer tube is two pipe sections with Angle Flange connections. 30" to 40", outer tube is three pipe sections with Angle Flange connections. These larger diameters with multiple sections are provided with nuts, bolts and washers included for assembly of the complete unit.

Optional End Styles: Standard QF end can be changed to Raw ID (RI), Raw OD (RO), No Fitting (NF), Hose Adapter (RF), Flat Flange (FFL), Angle Flange (AFL), or Van Stone (VS).