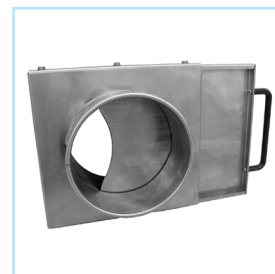


# Blast Gate NFMES

## Ordering Information

- When ordering, specify material, gauge (if non-standard), dimension and end styles.
- Manually operated, energy saving blast gates. Compact and easy to operate. Special sealing device reduces air loss and friction in operation.



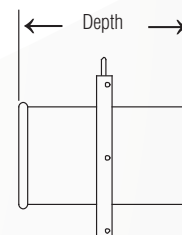
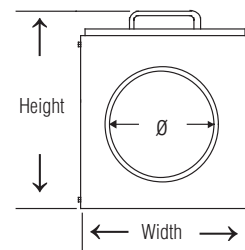
Ø in	Height Closed in.	Width in.	Depth Opened in.	Std Weight Lbs
3	7.00	5.25	5.38	
4	6.25	6.12	5.38	2.70
5	10.00	7.00	5.00	3.30
6	11.12	8.00	5.00	5.90
7	12.00	9.37	5.00	6.00
8	13.25	11.00	5.00	6.75
9	14.37	11.37	5.00	7.50
10	16.25	13.50	5.00	9.12
12	17.87	15.75	5.00	13.00
14	28.50	18.00	5.00	18.25
16	28.50	18.00	5.00	21.50

## QF Material Options

Galv (Collar)				SS (Collar)			
Gauges	Size (inches)		Gauges	Size (inches)			
	Min. Ø	Max. Ø		Min. Ø	Max. Ø		
Standard	22	3	12	22	3	12	
	20	14	16	20	14	16	
Optional	18	3	16	18	3	16	
	16	8	16	16	8	16	
	14	8	16	◇ SS Blast Gates have a production time of 7 days min.			

## Flanged Material Options

Galv (Collar)				SS (Collar)			
Gauges	Size (inches)		Gauges	Size (inches)			
	Min. Ø	Max. Ø		Min. Ø	Max. Ø		
Standard	22	3	12	22	3	12	
	20	14	24	20	14	24	
	18	26	40	18	26	30	
Optional	18	3	24	18	3	24	
	16	8	24	16	8	24	
	14	8	30				



### Construction

**Blade and body:** 18 gauge  
**Collars:** Located on the exterior side of each port and considered as air flow non-directional. Collars have a laser welded longitudinal seam. Collars are spot welded to body.  
**Handles:** 1018 carbon steel Powder Coated  
**Optional End Styles:** Standard QF end can be changed to Raw ID (RI), Raw OD (RO), No Fitting (NF), Hose (RF), Flat Flange (FFL), Angle Flange (AFL), or Van Stone (VS).



**Temperature Rating:** Max. temperature limited to 250°F due to properties of the gasket material (High Density Polyethylene - HDPE).

SS Blast Gates have a production time of **7 business days** minimum