

## Rubber Hose, Black or Clear

### Ordering Information

- When ordering, specify Black or Clear, dimension, and overall length. Supplied in 5' increments, ex. 5', 10', 15'.
- Black is thermoplastic flexible rubber hose reinforced with spring steel wire helix. 1" - 12" is sold in 5' increments up to 50' maximum. 14" - 24" sold in 5' increments up to 25' maximum.
- Clear is polyurethane flexible rubber hose reinforced with a bronze coated spring steel wire helix, manufactured with FDA acceptable materials. 2" - 12" is sold in 5' increments up to 50' maximum. 14" - 16" sold in 5' increments up to 25' maximum.
- Order Hose or Bridge Clamps separately.
- The Hose Adapter can be used with this Hose.



Black Hose						
Inside Ø in.	Wall Thickness in.	CL Bend Radius in.	Compression Ratio in.	Negative Pressure in./hg	Working Pressure PSI	Approx Weight lbs/hr
1	N/A	N/A	N/A	N/A	N/A	.14
1.5	.025	1.7	2:1	29	25	.17
2		2	2:1	29	19	.24
2.5	.030	2.5	2:1	29	14	.27
80mm		3	2:1	29	11	.34
4		4	2:1	29	10	.39
5		5.5	2:1	29	9	.50
5.5		6.5	2:1	17	8	.64
6		6.8	2:1	12.5	7	.71
7		6	3:1	11	7	.91
8		7	3:1	9	5	1.00
9		8	3:1	5.5	4.5	1.04
10		9	3:1	10	4	1.20
12	10	3:1	6.5	4	1.60	
14	12	3:1	5	3.8	2.00	
16	14	3:1	3	3.2	2.40	
18	16	3:1	2.3	2.6	2.80	
20	18	3:1	2	2.3	3.60	
22	21	3:1	1.5	2	4.00	
24	25	3:1	.8	1.75	6.00	



**Temperature Rating:** Black Hose: -65° to 275°  
Clear Hose: -65° to 225°

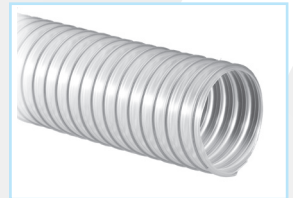
Technical data based on 2 ft. straight lengths of hose @ 72°

Clear Hose							
Inside Ø in.	Wall Thickness in.	CL Bend Radius in.	Compression Ratio in.	Negative Pressure in./hg	Working Pressure PSI	Approx Weight lbs/hr	
2	.015	2.00	3:1	29.0	30.0	.25	
2.5	.020	2.75	4:1	19.0	30.0	.35	
80mm		3.25	4:1	29.0	30.0	.40	
4		3.75	4:1	24.0	22.0	.50	
5		4.50	4:1	13.0	18.0	.60	
6		5.25	4:1	8.0	15.0	.70	
7		5.88	5:1	8.0	10.0	.80	
8		6.50	5:1	2.0	7.0	.90	
9		N/A	5:1	N/A	N/A	N/A	N/A
10		7.50	5:1	2.0	7.0	1.20	
12		9.00	5:1	1.7	6.0	1.40	
14	12.00	5:1	1.1	5.0	1.60		
16	14.00	5:1	7.0	4.6	1.80		

## Static Dissipative Urethane Hose, Clear

### Ordering Information

- When ordering, specify size dimension, and overall length. Supplied in 5' increments, ex. 5', 10', 15'.
- Medium weight static dissipative polyurethane hose reinforced with a bronze coated spring steel wire helix, manufactured with FDA acceptable materials.
- Great abrasion resistance & high tear strength as well as superior chemical resistance, excellent flexibility, and tolerance for applications with wide temperature ranges.
- Order Hose or Bridge Clamps separately.
- The Hose Adapter can be used with this Hose.



Inside Ø in.	Wall Thickness in.	CL Bend Radius in.	Compression Ratio in.	Negative Pressure in./hg	Working Pressure PSI	Approx Weight lbs/hr
3	.030	3	3:1	29	29	.4
4		4		29	25	.7
5		5		17	22	.9
6		6		15	19	1
8		8		9	14	1.5
10		8		4	11	1.6
12		10		2.2	10	2



**Temperature Rating:** -65° F to 225° F