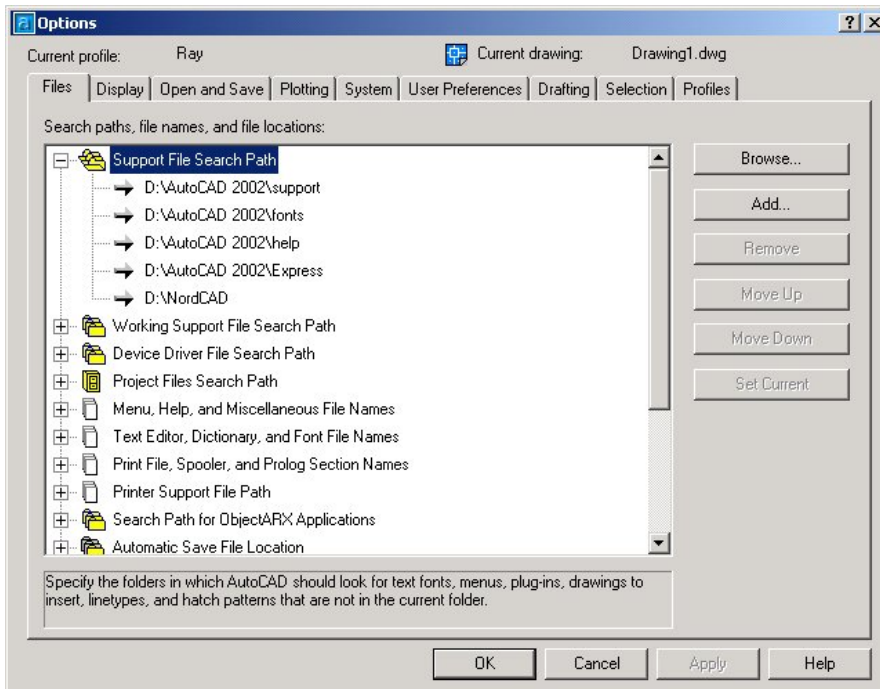


NordCAD 2.0

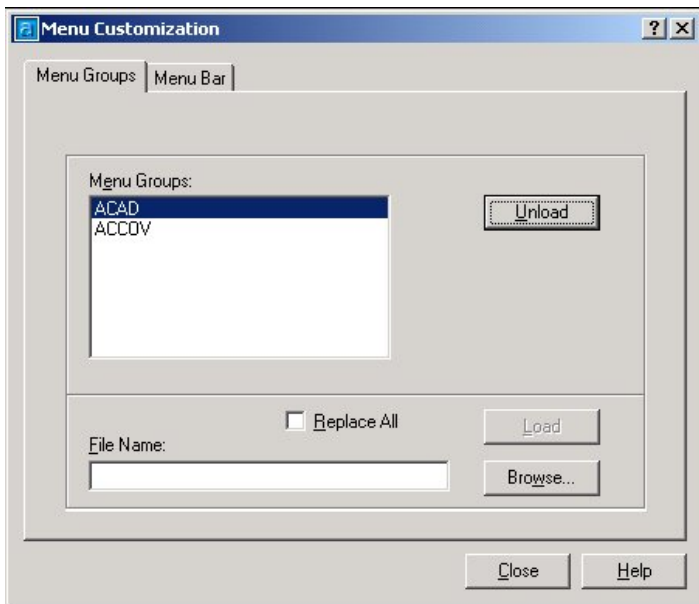
Installation Instructions

Note: This program is compatible with the following versions of AutoCAD: 2000, 2002, 2004, and 2005. Please note it is **not** compatible with any LT versions. If you have already installed our previous version skip to step 14. If not please proceed with the below instructions.

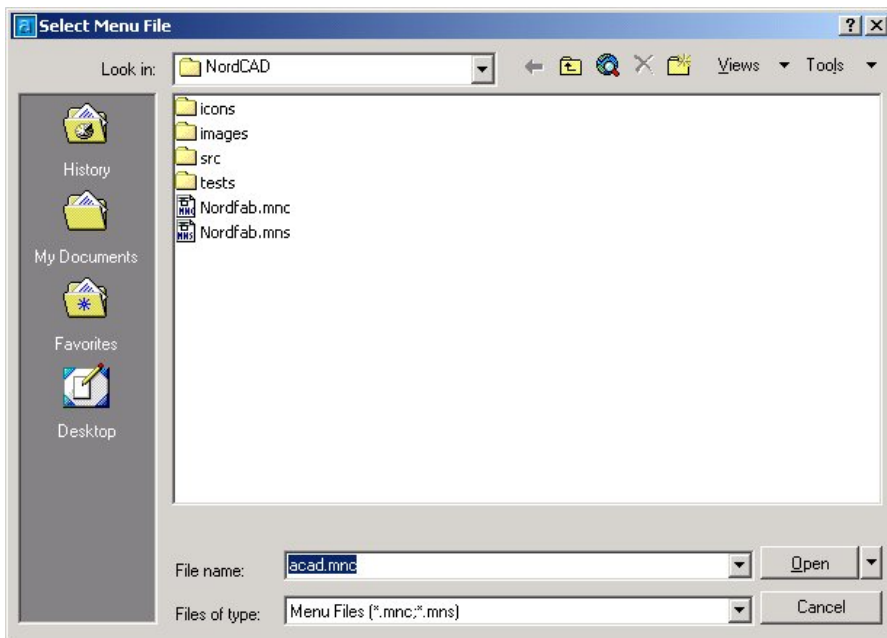
1. Insert CD
2. Copy the NordCAD folder to your C:/
3. Open AutoCAD
4. From the **Tools** pull-down menu, select **Options**. This will open the dialog box as shown. Select the **Files** tab if the screen isn't as shown.



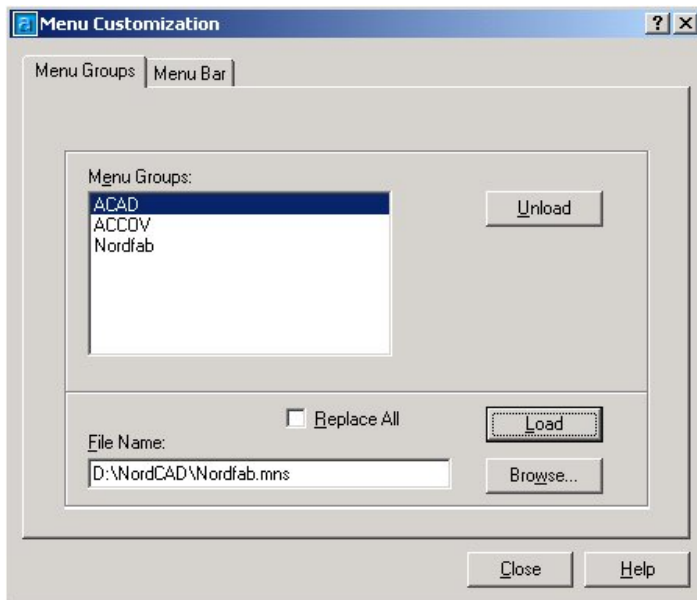
5. Select the **+** to expand the **Support File Search Path**.
6. Select the **Add** button to insert a new support path.
7. Select the **Browse** button to locate the NordCAD folder on your C:/ . This will add NordCAD to the **Support File Search Path**.
8. Press **Ok** to close this dialog box
9. From the AutoCAD command line, type **MENULOAD**. This will open the dialog box as shown.



10. Use the **Browse** function to search for the NordCAD folder, select the **Nordfab.mns** file as shown and select **Open**.



11. You will see the path for NordCAD in the File Name box. Select **Load** to add NordCAD to the Menu Groups. This will allow NordCAD to automatically load each time AutoCAD is opened. Select **Close** to remove this dialog box.



12. You will see a new toolbar located on your AutoCAD screen. This toolbar will look as follows.




13. Now your NordCAD is fully loaded and ready to use. (new users disregard steps 14-17)
14. Close AutoCAD
15. Insert CD
16. Cut and paste the **Nordfab.dvb** from the CD to you existing NordCAD directory. When prompted that you have an existing file select "yes" to replace the existing file.
17. This will complete the install for an existing user.

You will not have to do this each time open AutoCAD. We have created these steps to eliminate that.

NordCAD

Operating Instructions

1. To start NordCAD, select . This will show the dialog box as follows.





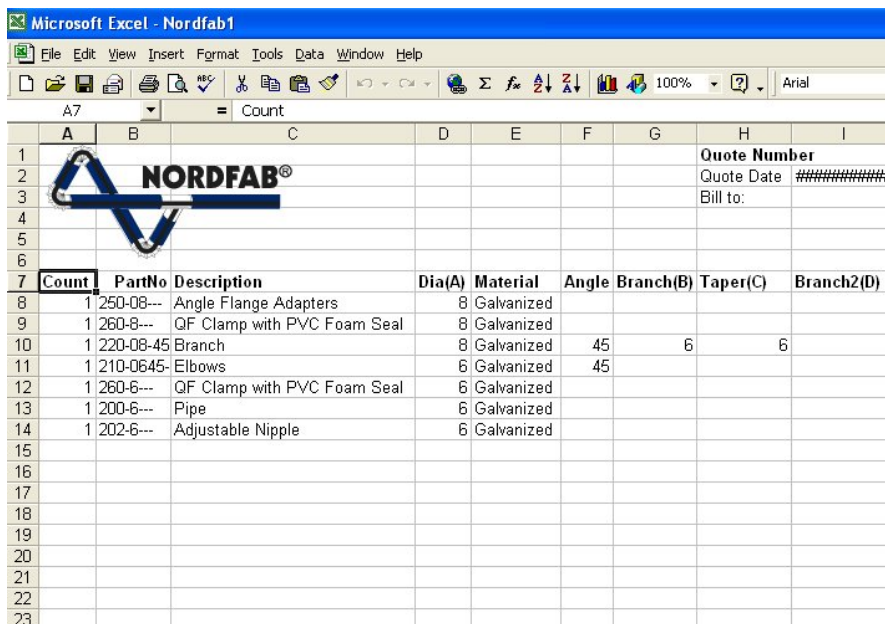
Select the component you would like to insert.

This box contains all variables for the selected part.

The Angle field will determine the angle of your branches as well as elbows.

Item	Value
Diameter (a)	12
Branch Diameter (b)	8
Taper Diameter (c)	8
Branch 2 Diameter (d)	8
Material	Galvanized
Angle	30
Connection Type	Clamp
RadiusType	Standard

2. To start the Multiple Pipe function, select . This will allow you to insert a run of pipe any length. This function will display each piece of pipe with a clamp as well as the adjustable nipple at the end of the run.
3. To start the Bill of Material function, select . This will allow you to generate a Bill of Materials, in Microsoft Excel, for the Nordfab components you have inserted into your drawing. Simply select the button and the program will generate the Bill of Materials automatically. The format will show as follows.



Count	PartNo	Description	Dia(A)	Material	Angle	Branch(B)	Taper(C)	Branch2(D)
1	250-08---	Angle Flange Adapters	8	Galvanized				
1	260-8---	QF Clamp with PVC Foam Seal	8	Galvanized				
1	220-08-45	Branch	8	Galvanized	45	6	6	
1	210-0645-	Elbows	6	Galvanized	45			
1	260-6---	QF Clamp with PVC Foam Seal	6	Galvanized				
1	200-6---	Pipe	6	Galvanized				
1	202-6---	Adjustable Nipple	6	Galvanized				

The letters in parentheses reflect the A, B, C and D dimensions in the Nordfab catalog.

NordCAD

Tricks and Tips

1. A new feature for NordCAD 2.0 is the ability to create branches at 30° and 45°.
2. All parts match Nordfab specifications.
3. Freeze all layers not in use. This program refreshes the screen when a part is inserted, because of that we recommend that you freeze all layers not in use.
4. Do not explode parts. Parts that are exploded will not be added to the Bill of Material.
5. Parts copied will be added to the Bill of Material. For example, if an 8" end cap is inserted and copied once, the Bill of Material will show two 8" end caps.
6. Always verify the degree of elbow in the degree pull down menu before inserting.
7. The system only inserts one clamp per component, verify the clamp count in the Bill of Material.
8. The system does not generate a top view of an elbow.
9. The system does not generate a pipe run less than 11".